

Tonia Gunstone x Jonathan Loxley
63°N 19°W | COORDINATED
4 Nov - 24 Dec 2022

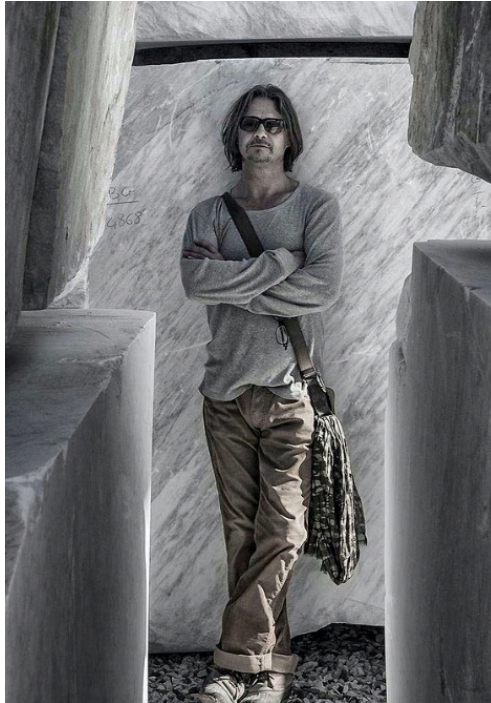


Tonia Gunstone

Tonia Gunstone is interested in wilderness. Walking in wild places, from forest and woodland to mountains, glaciers and coastal paths, captures her imagination and fuels her interest in how and why we build connections to place. Often, she records her experiences by making some marks in a sketchbook, collecting small objects, pebbles or stone fragments and taking photographs, using her senses as a way of remembering the experience of being there.

Although firmly rooted in landscape, Tonia's paintings are largely abstract in nature. Her work evolves organically, combining line, texture and colour with experimental and instinctive mark-making, which often follows a line of enquiry connecting elements of previous projects to current work in progress. She is motivated by the painting process itself, allowing the accidentals to determine the next move, making use of whatever tools she has to hand.

"For me, landscape is more than the topographical elements of a geographical location. It is the reflection of time passing, of human activity and global history; it gently reminds us of the importance of reconnecting with ourselves."



Jonathan Loxley

Jonathan Loxley is in love with the world around him and has unconsciously found himself worshipping it. Not at an altar, but at some plain wooden table. First clay, and then stone, attempting to translate a thought or a feeling into stone, driven there by an instinct that what is truly beautiful could be truly true.

His pieces may be small, large, or even monumental. They may be outwardly simple or clearly complex. Some works challenge what is geometrically possible. But what they all have in common is a deep respect for their natural idiosyncrasies, exposed in their first investigative meeting.

It is no trivial moment, the first impact of a tool, the first strike into a piece of stone which has been intact for tens of millions of years. It can be violent, loud and dirty, and it can weary the body, but the ageless sincerity of the stone is simply a waiting and inviting companionship.

In this exhibition, Jonathan offers pieces in a range of marbles. Some are exactly and finely finished, others are more immediate and impulsive. They are all completely resolved, the stone elevated by its transformation. 'A master craftsman was here,' they seem to say, 'and this is the result of our meeting.'

In 'The Event', a five-ton piece of stone is dropped onto a smaller piece of marble. Between them sits a ball bearing. The massive impact fractures the lower stone and creates a landscape. Two pieces of the outcast stone are then beautifully carved to create figures - two witnesses to a moment which represents not only the fragmentation of a piece of mountain untouched for 55 million years but the moment we, as humans, set out to know everything. Just these two pieces return to the stone base, fitting perfectly into it like fractal keys; the only pieces of stone ever to nestle there, or which ever could.

We can arrange delivery and installation

Instalment plans available – please ask for details



The Vanner Gallery
45 High Street
Salisbury
01722 501 551
hello@vannergallery.com
vannergallery.com