

UNCHARTED

LISLE
SEWELL
RICHARDSON
ATKINSON
MORSE

The title of this exhibition 'Uncharted' refers to the way in which these five artists engage with the physical world. Their approach is investigative and playful, primarily concerned with the dynamics of visual language, as each artist experiments with their own chosen materials and techniques. It is a journey of discovery, as they are all in a fluid state of 'finding out', by chance, by risk taking and by exploring. Bringing that to light is fundamentally what connects us all.

SUSANNA LISLE

susannalisle@hotmail.co.uk



Flutter, 2023 oil on canvas 71 x 71cm

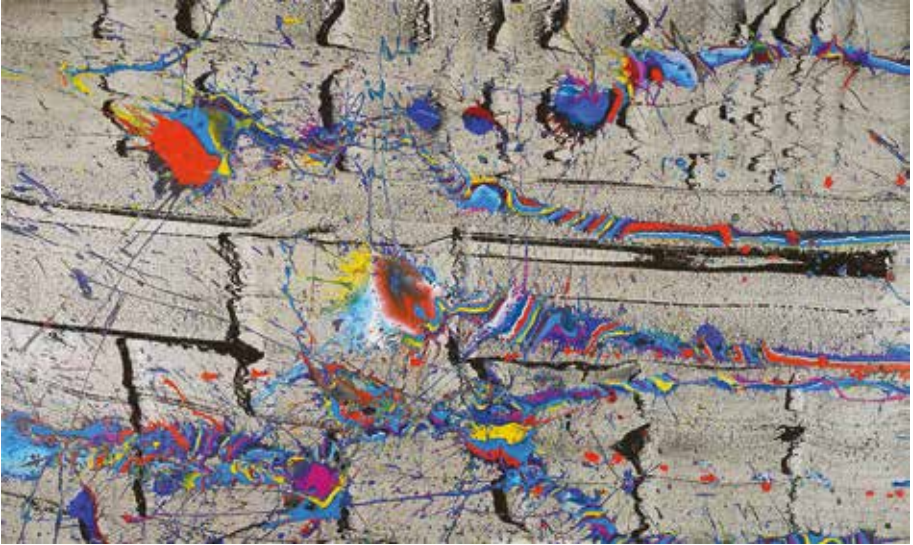
Susanna Lisle's paintings develop from an interplay between organic form, pattern, and geometry. She explores the way that geometry and pattern can serve as metaphors for everyday experience or something more contemplative. From the simplest structures a multitude of complex worlds can emerge, weaving together clarity and ambiguity. These magical and intricate systems are reflected and replicated in nature.

She studied Painting at Goldsmiths School of Art, University of London and completed an MA in Fine Art and Contemporary Practise at Bath School of Art.

Her work has been exhibited widely. Recent shows include a solo exhibition at Andelliart in Wells in 2017, a solo show at the Whittox Gallery in Frome in 2019 as well as a group show at Andelliart in 2019 and a show with Jenny Morse at the Whittox in 2021.

ROBIN SEWELL

robin.sewell@mac.com



Awakening 2023 Dry compound acrylic on panel 73.5 x 121cm

Robin Sewell devises ways of stepping back to allow his drawing and painting materials to have a 'voice.' A playful studio practice unfolds using handmade tools and constructed devices that allow insights into the behavioural nature of the materials. This methodology has revealed abilities beyond his competence and outcomes beyond his imagination, allowing personal imagery related to daily concerns to arrive without intention.

Born and educated in Leeds, Yorkshire. Jacob Kramer Foundation, then Cardiff College of Art and Postgraduate at the Slade School of Fine Art, UCL London.

Senior lecturer in fine art from 1980 at Maidstone College of Art, then KIAD, retired from The University of the Creative Arts, Canterbury, Kent in 2012.

Studios have been in London 1973 - 2011 - Umbria Italy 2011 - 2016. He now lives and works in Steeple Ashton, Wiltshire

Recent exhibitions and talks 2022/23

Solo show ARRIVALS Andelli Gallery, Wells.

Space Park Leicester, SPACE: SCIENCE AND NATURE. Awarded outstanding artwork prize.

Solo show LIGHT WATER REBELLIONS at the Whittox Gallery, Frome.

OUT LOUD Trowbridge Town Hall highlighting addiction awareness.

Artists talk for the Bath Society of Artists at the Bath Litary and Scientific Institution.

Network exhibition at the RWA Bristol.

CATHERINE RICHARDSON

catherine@catherinerichardson.com



Cracks in a Dream Acrylic on cradled wood panel 89 x 122 x 5cm

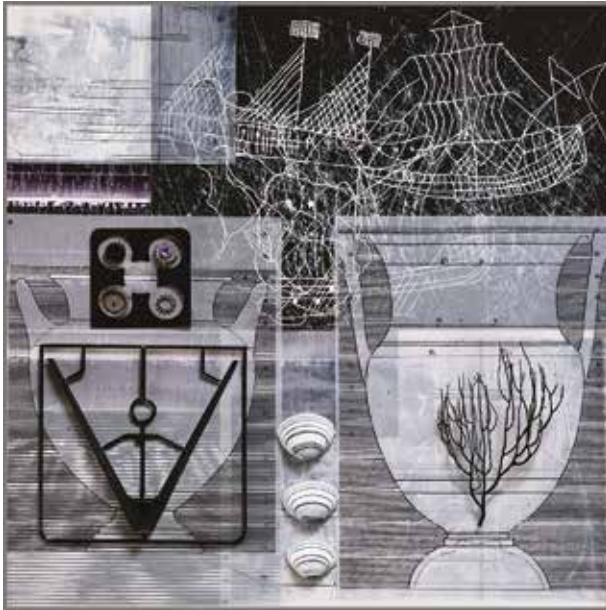
Catherine Richardson's paintings and drawings draw inspiration from the striking structures and ancient geology found in remote regions such as the Arctic, Peru and most recently, Eastern Iceland, where she enjoyed a month-long artist residency.

In her work, Catherine imagines a scaffold of geology supporting wild and remote landscapes. Using gestural strokes, texture and drawing she mixes and explores with various materials to note the untameable evolution in our earth.

Catherine Richardson holds a BA from the Surrey Institute of Art and Design in the UK and an MA from John F. Kennedy University in California. Currently based in Healdsburg, California, and Somerset, England, Catherine's art practice focuses on painting, printmaking, and drawing. She has received awards such as the Sonoma County Emerging Artist Award and the Visions Of Science Award, Bath University, UK. Her work has been exhibited internationally, featured in publications, and she has participated in art residencies in Iceland and Ireland.

JULIA ATKINSON

www.julia-atkinson-artist.co.uk



Linear Variations Objects in perspex box 50 x 50 x 5cm ht

Julia Atkinson uses objects and surfaces natural or manmade, historical and multicultural, to make assemblages. Each one of these has a theme but they are arranged according to their visual affinities. These works are based on her lifelong passion for collecting found objects.

She studied at Canterbury College of Art from 1960, then two years post graduate at the Slade School, London. Here she won prizes for painting and screen-printing and was asked to continue for a further two years.

On leaving the Slade she was invited to teach in the USA (Moorhead State University, Minnesota and Lewis and Clark College, Portland Oregon). She later taught at various art colleges in England.

Her early work explored the optical effects of colour, initially in 10 foot wide striped canvases, then in an extensive body of screen prints. Some of these were shown at Vanner's opening show.

Her latest London Gallery was Brownsword Hepworth. In 2013 she had a major Retrospective at the Victoria Art Gallery in Bath. She has exhibited in several countries and her work is in many collections including those of the Government and the British Council.

JENNY MORSE

www.jennymorse.com



Azahar Painting on paper 103 x 74cm

Jenny Morse specialises in one off pieces, often combining painting and screen-printing in the making process. Her work is imbued with a sense of colour and light, and although essentially abstract often includes motifs found in nature. She enjoys the element of surprise and the interplay between chance and control that printmaking can offer.

She studied Fine Art at Falmouth School of Art, followed by completing an MA in printmaking at the Royal College of Art.

She has exhibited widely, including at the Bath Society of Artists Open, The Whittox Gallery (2 person show with Susanna Lisle), and The Royal Academy of Arts Summer show. Her work is in many collections in the UK and abroad.

UNCHARTED

30 June – 29 July 2023



The Vanner Gallery
45 High Street
Salisbury
vannergallery.com
@thevannergallery

We can arrange delivery and installation
Purchases may be made in installments
Please ask